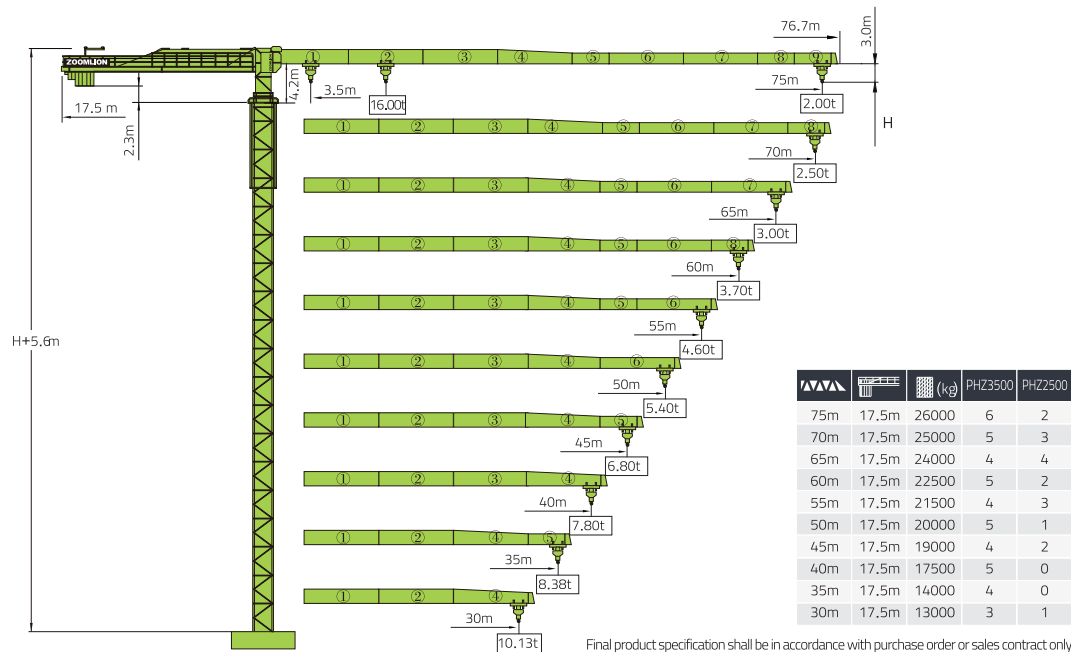
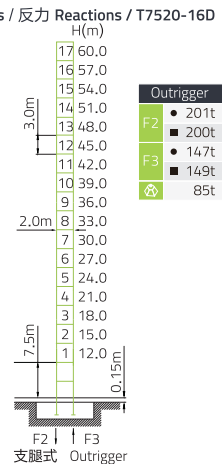


T7520-16D

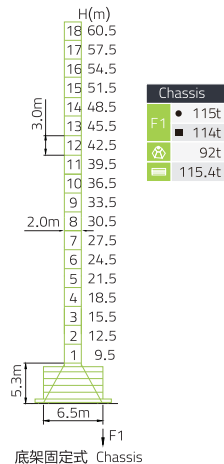
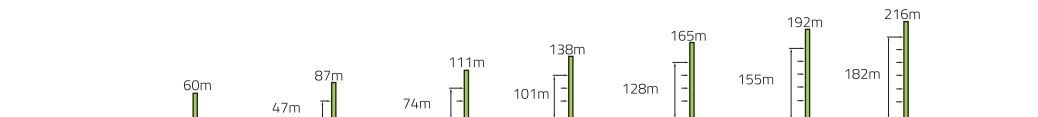


Final product specification shall be in accordance with purchase order or sales contract only

塔身 Masts / 反力 Reactions / T7520-16D



附着 Anchorages / T7520-16D









- 工作状态反力
Reactions in service
- 非工作状态反力
Reactions out of service
- ⊗ 独立高度、最大起重臂的自重 (不含平衡重、吊重)
Weight with max free-standing height, max jib (without counter-weight and load)
- ▬ 独立高度、最大起重臂长时的压重重
Ballast weight with max free-standing height

T7520-16D

起重特性 Load Diagrams

Max. Capacity m/t		3.5~12.5	15	20	25	30	35	40	45	50	55	60	65	70	75
75 (R=76.7)	⊔	3.5-25.4/8.00	8.00			6.57	5.47	4.64	4.01	3.50	3.09	2.75	2.46	2.21	2.00
	⊔⊔	3.5-13.4/16.00	16.00	13.94	9.82	7.43	5.86	4.75	3.93	3.29	2.78	2.37	2.03	1.74	1.49
70m (R=71.7)	⊔	3.5-27.6/8.00	8.00			7.26	6.05	5.15	4.46	3.91	3.46	3.08	2.77	2.50	
	⊔⊔	3.5-14.5/16.00	16.00	15.36	10.87	8.25	6.54	5.33	4.43	3.74	3.19	2.74	2.37	2.05	1.78
65m (R=66.7)	⊔	3.5-29.3/8.00	8.00			7.77	6.48	5.53	4.79	4.21	3.73	3.33	3.00		
	⊔⊔	3.5-15.3/16.00	16.00	11.64	8.87	7.05	5.77	4.81	4.08	3.49	3.01	2.62	2.28		
60m (R=61.7)	⊔	3.5-31.7/8.00	8.00			7.12	6.08	5.28	4.65	4.13	3.70				
	⊔⊔	3.5-16.6/16.00	16.00	12.78	9.77	7.79	6.40	5.37	4.57	3.93	3.41	2.98			
55m (R=56.7)	⊔	3.5-34.5/8.00	8.00			7.87	6.73	5.86	5.17	4.60					
	⊔⊔	3.5-18.0/16.00	16.00	14.12	10.82	8.67	7.15	6.02	5.14	4.45	3.88				
50m (R=51.7)	⊔	3.5-35.8/8.00	8.00			7.03	6.12	5.40							
	⊔⊔	3.5-18.6/16.00	16.00	14.72	11.30	9.06	7.48	6.31	5.40	4.68					
45m (R=46.7)	⊔	3.5-39.1/8.00	8.00			7.79	6.80								
	⊔⊔	3.5-20.3/16.00	16.00	12.55	10.10	8.36	7.07	6.08							
40m (R=41.7)	⊔	3.5-39.1/8.00	8.00			7.80									
	⊔⊔	3.5-20.3/16.00	16.00	12.56	10.10	8.37	7.08								
35m (R=36.7)	⊔	3.5-35/8.00	8.00												
	⊔⊔	3.5-20.4/16.00	16.00	12.57	10.12	8.38									
30m (R=31.7)	⊔	3.5-30/8.00	8.00												
	⊔⊔	3.5-20.4/16.00	16.00	12.59	10.13										

传动机构 Mechanisms

配置 Configuration	Configuration	m/min	⊔		⊔⊔		kW	
			IV	V	IV	V		
 起升 Hoisting	QE1675E	m/min	75	37.5	37.5	18.75	60	600m(6 layers)
		t	4	8	8	16		
 回转 Slewing	HVV145B1.130A HVV145B2.130A	r/min	0~0.6				2x145	① 超出咨询我们 Consultus if overtop
	N.m							
 变幅 Trolleying	BP110A	m/min	0~100				11	
 行走 Travelling	ZAH52A-D ZDH52A-D	m/min	0~25				4x5.2	
	380V(±10%)50Hz	86+4x5.2kW						

200t·m