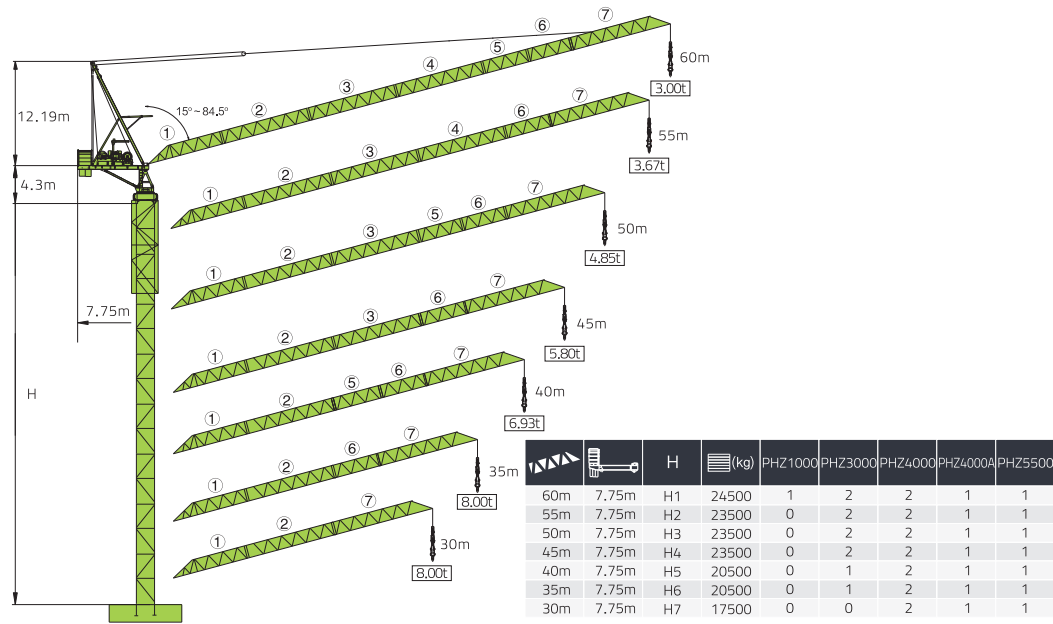
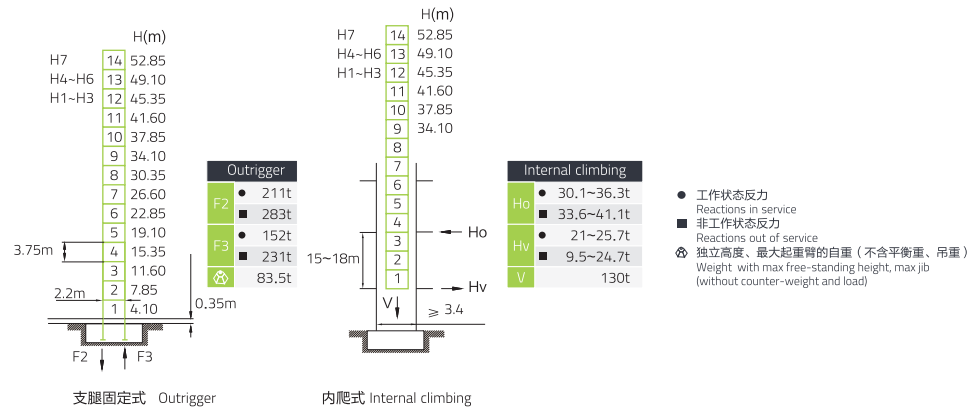


# L250-16

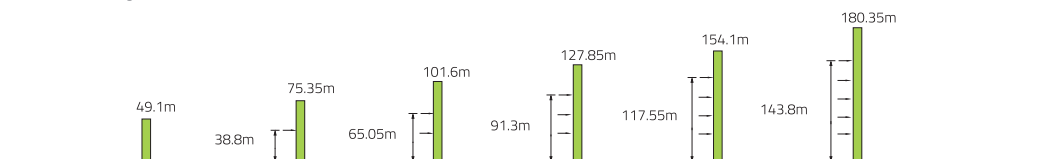


Final product specification shall be in accordance with purchase order or sales contract only

## 塔身 Masts / 反力 Reactions



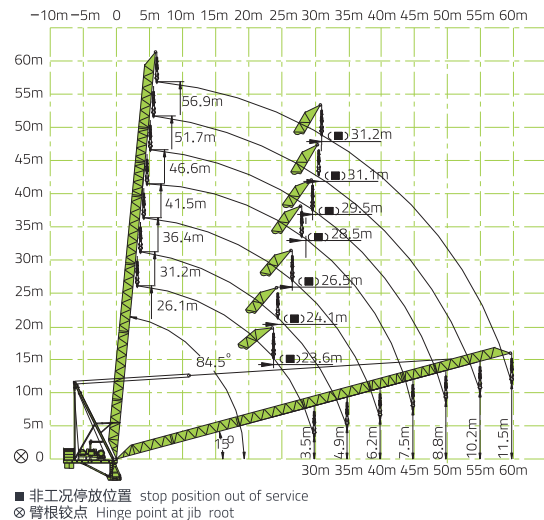
## 附着 Anchorages



250t-m

# L250-16

起重臂 Luffing Jib








起重特性 Load Diagram

R(m)		Max Capacity m/t	18	20	25	30	35	40	45	50	55	60	
60	⌋	6.34-31.7/8.00	8				6.91	5.68	4.75	4.03	3.47	3.00(59.8m)	
55	⌋	5.58-31.11/8.00	8				6.90	5.65	4.71	3.93	3.47(59.8m)		
50	⌋	5.35-34.87/8.00	8				7.94	6.63	5.60	4.85(49.8m)			
	⌋⌋	5.35-22.87/12.00	12		11.09	9.18	7.88	6.55	5.53	4.79(49.8m)			
45	⌋⌋	5.35-17.1/16.00	15.58	13.95	11.00	9.09	7.62	6.47	5.46	4.73(49.8m)			
	⌋	4.86-34.63/8.00	8				7.94	6.69	5.80(44.9m)				
40	⌋	4.86-23.45/12.00	12		11.24	9.23	7.87	6.56	5.74(44.9m)				
	⌋⌋	4.86-17.68/16.00	15.85	14.29	11.16	9.15	7.8	6.55	5.68(44.9m)				
35	⌋	4.36-35.08/8.00	8						6.93(39.9m)				
	⌋	4.36-23.87/12.00	12		11.48	9.39	7.97	6.87(39.9m)					
30	⌋⌋	4.36-17.71/16.00	15.92	14.52	11.40	9.31	7.90	6.81(39.9m)					
	⌋	3.87-34.92/8.00	8				8.00(34.9m)						
25	⌋	3.87-24.33/12.00	12		11.66	9.51	8.16(34.9m)						
	⌋⌋	3.87-18.3/16.00	16	14.9	11.57	9.44	8.10(34.9m)						
20	⌋	3.38-29.95/8.00	8				8.00(29.9m)						
	⌋	3.38-24.52/12.00	12		11.77	9.61(29.9m)							
15	⌋⌋	3.38-18.83/16.00	16	15.11	11.70	9.56(29.9m)							

# L250-16

■ 传动机构 Mechanisms

配置 configuration		b <sub>o</sub>			b <sub>o</sub>			kW		
		III	IV	V	III	IV	V			
 起升 Hoisting	QPL16120B	m/min	0~46	0~92	0~120	0~23	0~46	0~60	75	930m $\Phi$ (6 layers)
		t	8	4	2	16	8	4		
 回转 Slewing	HVV145B1.130A HVV145B2.130A	r/min	0~0.7						2x145 N.m	①超出咨 询我们 Consult us if overtop
 变幅 Luffing	BPL450	min	2.7 (15° ~ 84.5°)						45	
	380V(±10%)50Hz	135kW								