

ZOOMLION ALL TERRAIN CRANE ZAT1200V753



ZOOMLION

Zoomlion Heavy Industry Science & Technology Co.,Ltd.

Add: No.677, Lugu Road, Zoomlion Industrial Park, Changsha, Hunan, China, 410205

Copyright©2023 Zoomlion. All rights reserved. Reproduction and copying of any part of contents is not allowed for any purposes without Zoomlion's approval.



Product specifications are subject to change without notice and obligation. The photographs and/or drawing in this document are for illustrative purposes only. Please consult your local ZOOMLION dealer for more information.
website:en.zoomlion.com 2023.12.13

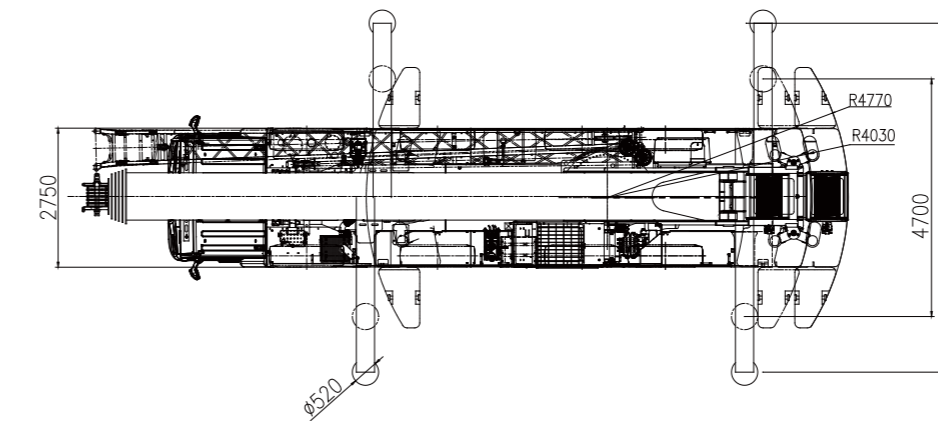
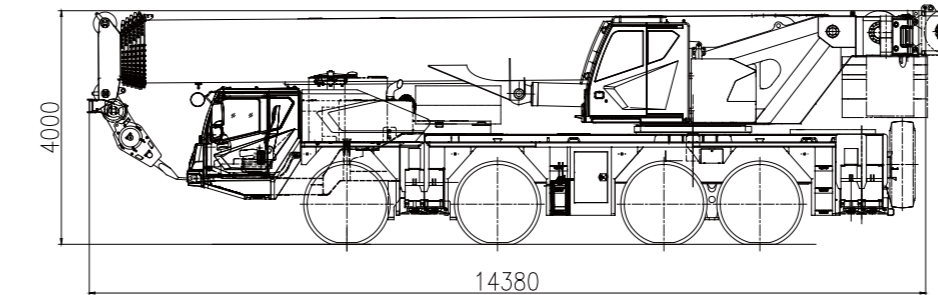
ZOOMLION

4.0
PRODUCTS

CONTENTS

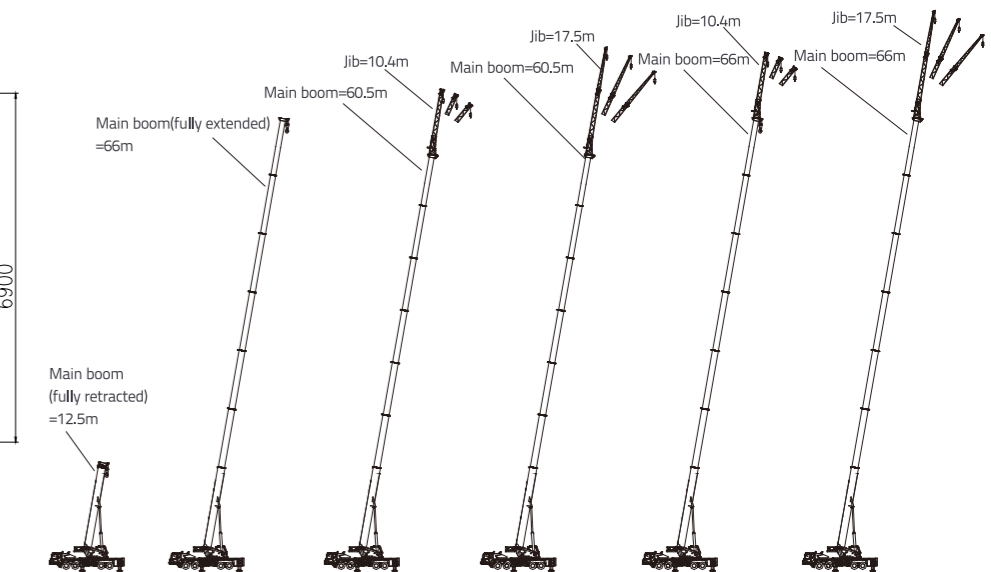
DIMENSIONS	2
OM COMBINATIONS	2
CRANE AND COMPONENT WEIGHTS	3
LIFTING HEIGHT CHART	3-9
TECHNICAL SPECIFICATIONS	10
MAIN TECHNICAL PARAMETERS	11

DIMENSIONS



OM COMBINATIONS

Working Condition	Boom/Jib Length
Main Boom	12.5m-66m
Main Boom+ 10.4m Jib	60.5m Main Boom + 10.4m Jib
Main Boom + 10.4m Jib	66m Main Boom + 10.4m Jib
Main Boom + 17.5m Jib	60.5m Main Boom + 17.5m Jib
Main Boom + 17.5m Jib	66m Main Boom + 17.5m Jib



CRANE AND COMPONENT WEIGHTS

Axle	1	2	3	4	Total weight
T	12	12	12	12	48

Hook

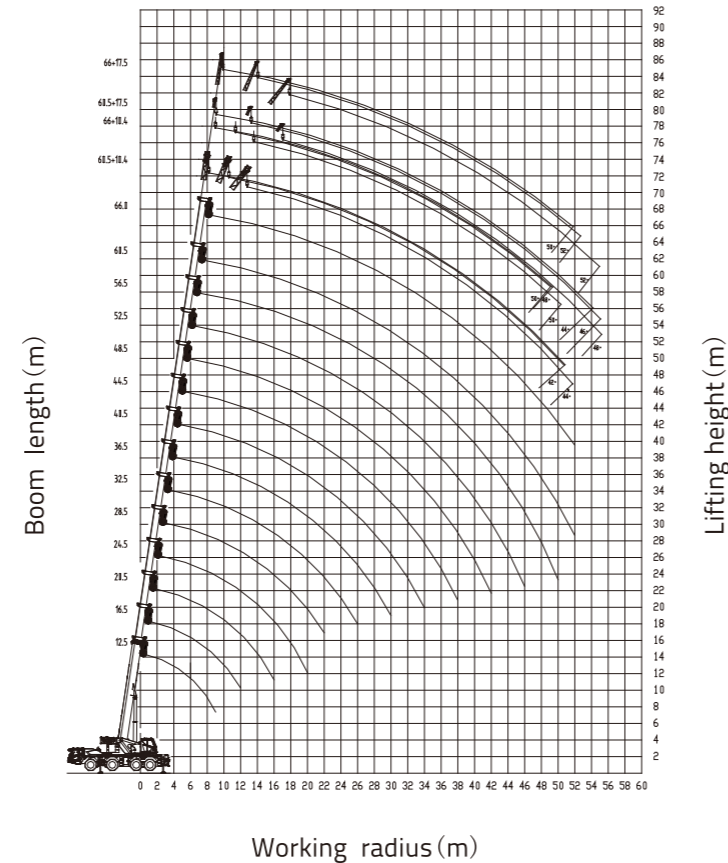
Specification	Weight (kg)	No. of Sheave	Fall	Single/double hook	Standard/optional configuration
90	1070	7	13	double hook	optional
80	685	6	13	single hook	optional
70	689	6	13	single hook	optional
60	670	6	12	single hook	optional
60	660	6	12	double hook	optional
35	380	3	6	single hook	optional
8	200	-	1	single hook	standard
60	510	5	10	single hook	standard

Working Speeds

Drive	Operation Speed (km/h) MAX.	Rope diameter/length	Max. single line pull
385/95R25 445/95R25(Optional)	80	60	Forward gears: 12.26/9.56/7.36/ 5.73/4.52/3.52 /2.71/2.11/1.63/1.27/1.00/0.78 Reverse gears:11.28/8.79

Drive	Operation Speed	Rope diameter/length	Max. single line pull
1	125m/min	20.0mm/310 m	8500kg
2	110m/min	20.0mm/220 m	8500kg
Swing	0 ~ 1.6r/min		
Derricking	58s/100s		
Telescoping	880s/850s		

LIFTING HEIGHT CHART



LIFTING HEIGHT CHART

Rated capacity chart with boom only

Unit: t

Outriggers fully extended to 6.9m, 31.3t counterweight (3.7t + 27.6t moved backward), over side or rear working area

Working Radius (m)	Boom length (m)												
	12.5★	12.5★	16.5	16.5	16.5	16.5	16.5★	20.5	20.5	20.5	20.5	20.5★	
2.5	120*												
3.0	80.0	80.0	38.0	60.0	65.0	67.5	70.0						68.0
3.5	73.0	71.0	36.0	55.0	65.0	65.0	68.0	27.5	41.5	64.5	65.0	66.5	65.5
4.0	67.0	65.0	34.0	51.0	62.5	62.5	62.5	26.0	39.5	59.5	65.0	65.0	61.0
4.5	62.0	60.0	32.0	47.0	58.5	58.5	58.5	24.5	37.0	55.0	61.0	61.0	56.5
5.0	58.0	55.0	30.5	44.0	54.5	54.5	54.5	23.0	34.5	51.5	56.5	56.5	52.5
6.0	51.5	47.0	28.0	39.0	48.0	48.0	48.0	21.5	32.5	48.5	52.5	52.5	46.5
7.0	45.5	41.0	26.0	35.0	42.0	42.0	42.0	19.5	29.0	43.0	46.5	46.5	40.5
8.0	40.0	36.0	24.0	31.5	35.6	35.6	35.6	17.8	26.0	38.5	40.5	40.5	36.0
9.0	34.4	32.0	22.5	29.0	33.0	33.0	33.0	16.3	23.6	35.0	36.0	36.0	32.1
10.0			21.0	26.5	29.5	29.5	29.5	15.0	21.8	32.0	32.1	32.1	28.9
11.0			20.0	24.6	26.5	26.5	26.5	14.0	20.0	28.9	28.9	28.9	26.0
12.0			19.0	22.9	23.8	23.8	23.8	13.0	18.5	26.0	26.0	26.0	23.2
14.0								12.3	17.2	23.2	23.2	23.2	18.7
16.0								10.9	15.1	18.7	18.7	18.7	15.0
18.0								9.8	13.5	15.0	15.0	15.0	
Reeving Hook		10			9					8			
Telescoping mode							60t						
I		1	1	1	1	1	1	1	1	1	1	1	2
II		1	1	1	1	1	2	1	1	1	1	2	2
III		1	1	1	1	2	1	1	1	1	2	2	1
IV		1	1	1	2	1	1	1	1	2	2	1	1
V		1	1	2	1	1	1	1	2	2	1	1	1
VI		1	2	1	1	1	1	3	2	1	1	1	1

Rated capacity chart

This crane is provided various rated capacity charts. The operator should select proper rated lifting load referring to resp. lifting capacity tables according to actual working conditions

- When the rated load ≤60t, a 60t hook should be used
- When 60t < rated load ≤70t, a 70t hook should be used
- When 70t < rated load ≤80t, a 80t hook should be used
- Rated loads marked with * are nominal values
- For boom length marked with ★, the boom is located over the rear working area

Rated capacity chart with boom only

Unit: t

Outriggers fully extended to 6.9m, 31.3t counterweight (3.7t + 27.6t moved backward), over side or rear working area

Working Radius (m)	Boom length (m)												
	24.5	24.5	24.5	24.5	24.5	24.5★	28.5	28.5	28.5	28.5	28.5	28.5★	
3.0	25.0	25.0	44.0	65.0	65.0	65.0							
3.5	23.5	23.5	42.0	61.0	64.0	64.0	19.0	25.5	29.0	44.0	50.0	50.0	
4.0	22.0	22.0	40.5	56.5	59.5	59.5	18.0	24.0	27.0	42.5	50.0	50.0	
4.5	20.5	20.5	38.5	53.0	55.0	55.0	17.0	22.5	25.5	41.0	50.0	50.0	
5.0	19.5	19.5	36.5	50.0	51.5	51.5	16.0	21.5	24.0	39.5	49.5	49.5	
6.0	17.5	17.3	32.7	44.0	45.0	45.0	15.0	19.0	22.5	36.0	44.5	44.5	
7.0	15.8	15.6	29.7	39.5	40.5	40.5	13.5	17.5	20.5	32.8	40.0	40.0	
8.0	14.4	14.2	27.1	36.0	36.0	36.0	12.5	16.0	18.5	30.1	36.2	36.2	
9.0	13.2	13.0	24.9	32.0	32.0	32.0	11.5	14.5	17.0	27.8	32.8	32.8	
10.0	12.2	12.0	23.0	29.8	29.8	29.8	10.5	13.5	15.5	25.8	30.2	30.2	
11.0	11.3	11.2	21.4	27.0	27.0	27.0	9.8	12.5	14.5	24.1	27.2	27.2	
12.0	10.5	10.4	20.1	24.0	24.0	24.0	9.1	12.0	13.5	22.6	24.5	24.5	
14.0	9.3	9.1	17.7	19.5	19.5	19.5	8.0	10.6	11.8	19.8	19.8	19.8	
16.0	8.3	8.1	15.6	15.6	15.6	15.6	7.0	9.5	10.4	16.0	16.0	16.0	
18.0	7.5	7.3	13.0	13.0	13.0	13.0	6.3	8.6	9.3	13.5	13.5	13.5	
20.0	6.8	6.6	11.0	11.0	11.0	10.9	5.7	7.8	8.4	11.5	11.5	11.5	
22.0							5.2	7.1	7.6	10.0	10.0	9.6	
24.0													
26.0													
Reeving Hook							8						
Telescoping mode										60t			
I	1	1	1	1	1	1	1	1	1	1	1	2	
II	1	1	1	1	2	2	1	1	1	1	2	2	
III	1	1	1	2	2	2	1	1	1	1	2	2	
IV	1	1	2	2	2	1	1	2	3	2	2	2	
V	2	3	2	2	1	1	3	3	2	2	2	1	
VI	3	2	2	1	1	1	3	2	2	2	1	1	

LIFTING HEIGHT CHART

Rated capacity chart with boom and jib

Unit: t

Boom (m) + jib (m), outriggers fully extended, 30.3t counterweight (2.7t + 27.6t moved backward)												
Boom angle(°)	60.5+10.4			60.5+17.5			66.0+10.4			66.0+17.5		
	0°	15°	30°	0°	15°	30°	0°	15°	30°	0°	15°	30°
82	6.5	5.5	5.0	4.0	3.2	2.5	5.4	4.4	4.0	3.6	2.8	2.3
80	6.5	5.5	5.0	4.0	3.0	2.4	5.1	4.2	3.9	3.4	2.6	2.2
78	6.5	5.5	5.0	3.8	2.8	2.3	4.8	4.0	3.8	3.2	2.4	2.1
76	5.9	5.0	4.6	3.6	2.6	2.2	4.5	3.8	3.6	3.0	2.3	2.0
74	5.4	4.6	4.3	3.3	2.5	2.1	4.2	3.6	3.4	2.8	2.2	1.9
72	5.0	4.3	4.0	3.1	2.4	2.05	3.9	3.4	3.2	2.6	2.1	1.8
70	4.6	4.0	3.7	2.9	2.3	2.0	3.6	3.2	3.0	2.4	2.0	1.7
68	4.2	3.7	3.5	2.7	2.2	1.9	3.3	3.0	2.8	2.2	1.9	1.6
66	3.9	3.5	3.3	2.5	2.1	1.85	3.0	2.8	2.6	2.1	1.8	1.5
64	3.6	3.3	3.1	2.4	2.0	1.8	2.8	2.6	2.4	2.0	1.7	1.45
62	3.3	3.1	2.9	2.3	1.9	1.75	2.6	2.4	2.2	1.9	1.6	1.4
60	3.1	2.9	2.7	2.2	1.8	1.7	2.4	2.2	2.0	1.8	1.5	1.35
58	2.9	2.7	2.5	2.1	1.7	1.6	2.0	1.8	1.7	1.6	1.4	1.3
56	2.6	2.4	2.3	2.0	1.6	1.5	1.7	1.5	1.4	1.4	1.3	1.2
54	2.3	2.1	2.0	1.8	1.5	1.4	1.4	1.3	1.2	1.2	1.1	1.0
52	2.0	1.9	1.8	1.6	1.4	1.3	1.2	1.1	1.0	1.0	0.9	0.8
50	1.7	1.6	1.5	1.4	1.3	1.2	1.0	0.9	0.8	0.8		
48	1.5	1.4	1.3	1.2	1.1	1.0	0.8					
46	1.3	1.2	1.1	1.0	0.9							
44	1.1	1.0	0.9	0.8								
42	0.9											
40												
Reeving Hook							1 8t					

Rated capacity chart with boom and jib

Unit: t

Boom (m) + jib (m), outriggers fully extended, 30.3t counterweight												
Boom angle(°)	60.5+10.4			60.5+17.5			66.0+10.4			66.0+17.5		
	0°	15°	30°	0°	15°	30°	0°	15°	30°	0°	15°	30°
82	6.5	5.5	5.0	4.0	3.2	2.5	5.4	4.4	4.0	3.6	2.8	2.3
80	6.5	5.5	5.0	4.0	3.0	2.4	5.1	4.2	3.9	3.4	2.6	2.2
78	6.5	5.5	5.0	3.8	2.8	2.3	4.8	4.0	3.8	3.2	2.4	2.1
76	5.9	5.0	4.6	3.6	2.6	2.2	4.5	3.8	3.6	3.0	2.3	2.0
74	5.4	4.6	4.3	3.3	2.5	2.1	4.2	3.6	3.4	2.8	2.2	1.9
72	5.0	4.3	4.0	3.1	2.4	2.05	3.9	3.4	3.2	2.6	2.1	1.8
70	4.6	4.0	3.7	2.9	2.3	2.0	3.6	3.2	3.0	2.4	2.0	1.7
68	4.2	3.7	3.5	2.7	2.2	1.9	3.3	3.0	2.8	2.2	1.9	1.6
66	3.9	3.5	3.3	2.5	2.1	1.85	3.0	2.8	2.6	2.1	1.8	1.5
64	3.6	3.3	3.1	2.4	2.0	1.8	2.8	2.6	2.4	2.0	1.7	1.45
62	3.3	3.1	2.9	2.3	1.9	1.75	2.5	2.4	2.2	1.9	1.6	1.4
60	2.9	2.8	2.6	2.2	1.8	1.7	2.2	2.1	2.0	1.8	1.5	1.35
58	2.6	2.5	2.4	2.1	1.7	1.6	1.9	1.8	1.7	1.6	1.4	1.3
56	2.3	2.2	2.1	1.9	1.6	1.5	1.6	1.5	1.4	1.3	1.2	1.15
54	2.0	1.9	1.8	1.7	1.5	1.4	1.3	1.25	1.2	1.1	1.0	0.95
52	1.7	1.6	1.5	1.4	1.3	1.25	1.1	1.05	1.0	0.9	0.85	0.8
50	1.4	1.35	1.3	1.2	1.1	1.05	0.9	0.85	0.8			
48	1.2	1.15	1.1	1.0	0.95	0.9						
46	1.0	0.95	0.9	0.9	0.85	0.8						
44	0.85	0.8										
42												
40												
Reeving Hook							1 8t					

TECHNICAL SPECIFICATIONS

Crane Superstructure

Main boom	7 boom sections made of 960MPa high-tensile steel, the boom head adopts new plate-type structure, realizing larger lapping ratio between boom sections, and matching with embedded sliding blocks. Main boom length: 12.5 m –66 m
Jib	10.4 m, 17.5 m. Offset: 0°, 15°, 30°
Derricking mechanism	1 front-mounted hydraulic cylinder with safety balance valve provides the boom with smooth derricking movements from -1° to 83°
Rooster sheave	It is secured at the outside of the boom head when it is not used. It can be rotated around the shaft and pinned onto the boom head when it is used
Slewing platform	Single ribbed plate structured and optimized slewing platform made from high-strength steel plate makes the layout of articulated points of boom and derricking mechanism more reasonable.
Hook	Optional 90t (anchor hook), 80t (single hook), 70t (single hook), 60t (anchor hook), 35t (single hook) Standard: 60t (main hook), 8t (auxiliary hook)

Slewing mechanism There are two reducers installed in the slewing mechanism. Via the planetary gear reducer, the axial plunger hydraulic motor drives the pinion gear on the output shaft to rotate the exterior toothed ring of slewing ring fixed on chassis frame, providing superstructure with 360° unlimited slewing

Hoist mechanism Main winch and auxiliary winch can either operate separately, or work simultaneously. Hydraulic variable motor + planetary reducer. Use high-tensile torsion resistant hoist rope

Operator's cab It is of steel-structure welded with right-mounted instrument console and adjustable seat with headrest. AC and heater. A cab tilting mechanism, can be tiltable up to 20°

Outriggers H-type outriggers, which are in box-shaped structure and welded of low-alloy and high-strength steel plate

Electrical system Double-wire system, 24 Volt DC

Crane Superstructure

Hydraulic system	The superstructure hydraulic system is controlled in the electro-hydraulic proportional way through the integrated load moment limiter Hydraulic tank: 875L
Counterweight	The weight of the under-slung movable counterweight is 31.3 t in total (with two optional 4.5 t side counterweight plates). Different combinations can be selected based on work need. Counterweight combinations include 1t, 2.7t, 2.5t, 3t, 6.4t, 6.7t
Safety devices	This crane is equipped with an automatic load moment limiter, warning light, digital LCD, hoisting limit switch, relief valve, etc
Travelling status	Travelling status 1: the total mass of the whole crane is 48t. The crane is installed with the main hook and 1t fixed counterweight plate, and without the jib and auxiliary hook. The single axle load is 12t and the crane can drive at the highest speed of 80km/h Travelling status 2: the total mass of the whole crane is 58t. The crane is installed with the main hook, rooster sheave, outrigger pads, 1t fixed counterweight, jib, 2.7 t auxiliary counterweight, and 6.4t lower movable counterweight. The single axle load is 14.5t and the crane can drive at the highest speed of 70km/h Travelling status 3: the total mass of the whole crane is 66t. The crane is installed with the main hook, 1t fixed counterweight, jib, 2.7 t auxiliary counterweight, 6.4t lower movable counterweight, 2.5t middle counterweight plate I, and 6.7t middle counterweight plate II. The single axle load is 16.5t and the crane can drive at the highest speed of 30km/h

Crane Carrier

Engine WP12.460E50, Rated power / RPM: 338 kW at 1900 r/min. Max. output torque / RPM: 2110 N.m at 1000 -1400r/min. Capacity of diesel oil tank: 400L

MAIN TECHNICAL PARAMETERS

Item		Value	Remarks	
Working performance	Max. rated lifting capacity	kg	120000	
	Max. load moment of basic boom	kN.m	3140	
	Max. load moment of max. length boom	kN.m	1811	
	Max. lifting height of basic boom	m	14.1	
	Max. lifting height of boom	m	66.8	
	Max. lifting height of jib	m	84.6	
	Max. lifting height of jib (with optional extension)	m	93.9	
Working speeds	Max. hoist rope speed (main winch)	m/min	125	
	Max. hoist rope speed (auxiliary winch)	m/min	110	
	Boom derricking up time	s	58	
	Boom telescoping out time	s	880	
	Slewing speed	r/min	0-1.6	
Driving	Max. driving speed	km/h	80	With 385/95R25 tires
	Max. gradeability	%	60	
	Min. turning diameter	m	15.75	
	Min. ground clearance	mm	326	
	Fuel consumption per hundred kilometers	L	63	
Mass	Deadweight in driving condition	kg	48000	
	Complete vehicle kerbmass	kg	47870	
	Front axle load	kg	24000	
	Rear axle load	kg	24000	
Dimension	Overall dimensions (L xW xH)	mm	14380 x2750 x4000	
	Longitudinal distance between outriggers	m	7.52	
	Horizontal distance between outriggers	m	6.9	Outriggers fully extended
	Tail slewing radius	mm	4060	
	Boom length	m	12.5-66.0	
	Boom angle	°	-1-83	
	Jib length	m	10.4, 17.5	
	Jib angle	°	0, 15, 30	